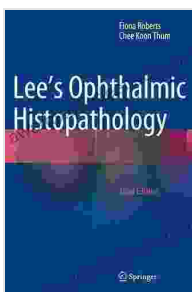


Lee Ophthalmic Histopathology: Unlocking the Secrets of the Eye

The human eye is a complex and delicate organ that enables us to perceive the world around us. However, like any other part of the body, the eye is susceptible to various diseases and conditions that can affect its function and vision. Accurate and timely diagnosis is crucial for guiding appropriate treatment and improving patient outcomes.



Lee's Ophthalmic Histopathology by Paul D. Sponseller

★★★★★ 5 out of 5

Language : English
File size : 346989 KB
Text-to-Speech : Enabled
Enhanced typesetting : Enabled
Print length : 1522 pages
Screen Reader : Supported



Lee Ophthalmic Histopathology is a leading provider of comprehensive diagnostic services for eye diseases, specializing in ocular histopathology. Our team of experienced pathologists and technicians utilizes advanced techniques and equipment to provide accurate and timely interpretations of ocular tissue specimens.

Our Services

We offer a wide range of diagnostic services, including:

- **Ocular histopathology:** Microscopic examination of eye tissue to diagnose diseases such as uveitis, retinitis, choroiditis, optic nerve disease, and ocular tumors.
- **Eye tumor diagnosis:** Specialized evaluation of ocular tumors, including uveal melanoma, retinoblastoma, and choroidal nevus.
- **Eye cancer diagnosis:** Comprehensive analysis of eye tissue to identify and characterize cancerous lesions.
- **Eye tissue diagnosis:** Evaluation of eye tissue for various conditions, such as corneal ulcers, conjunctival lesions, and eyelid disorders.

Our Expertise

Our team of pathologists is highly skilled and experienced in ophthalmic histopathology. They have extensive knowledge of eye diseases and are dedicated to providing accurate and reliable diagnoses.

We utilize state-of-the-art equipment and techniques, including:

- **Advanced microscopy:** High-resolution microscopy techniques to visualize cellular and tissue structures in detail.
- **Immunohistochemistry:** Staining techniques to detect specific proteins and biomarkers within eye tissue.
- **Molecular pathology:** Analysis of genetic mutations and other molecular markers to aid in diagnosis and prognosis.

The Importance of Timely and Accurate Diagnosis

Early and accurate diagnosis of eye diseases is essential for preserving vision and preventing irreversible damage. Our services can help guide appropriate treatment, monitor disease progression, and provide prognostic information.

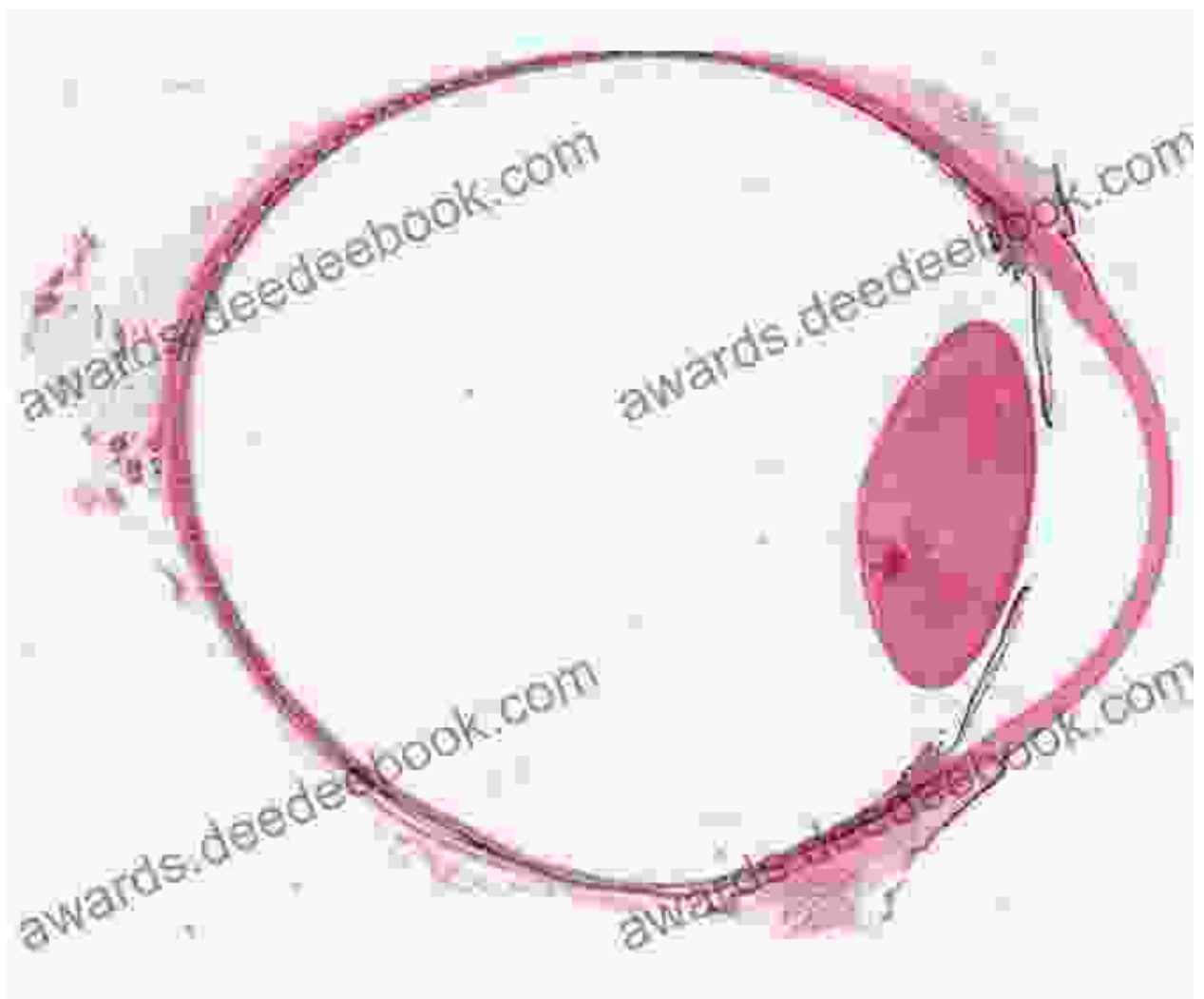
Ocular histopathology plays a vital role in:

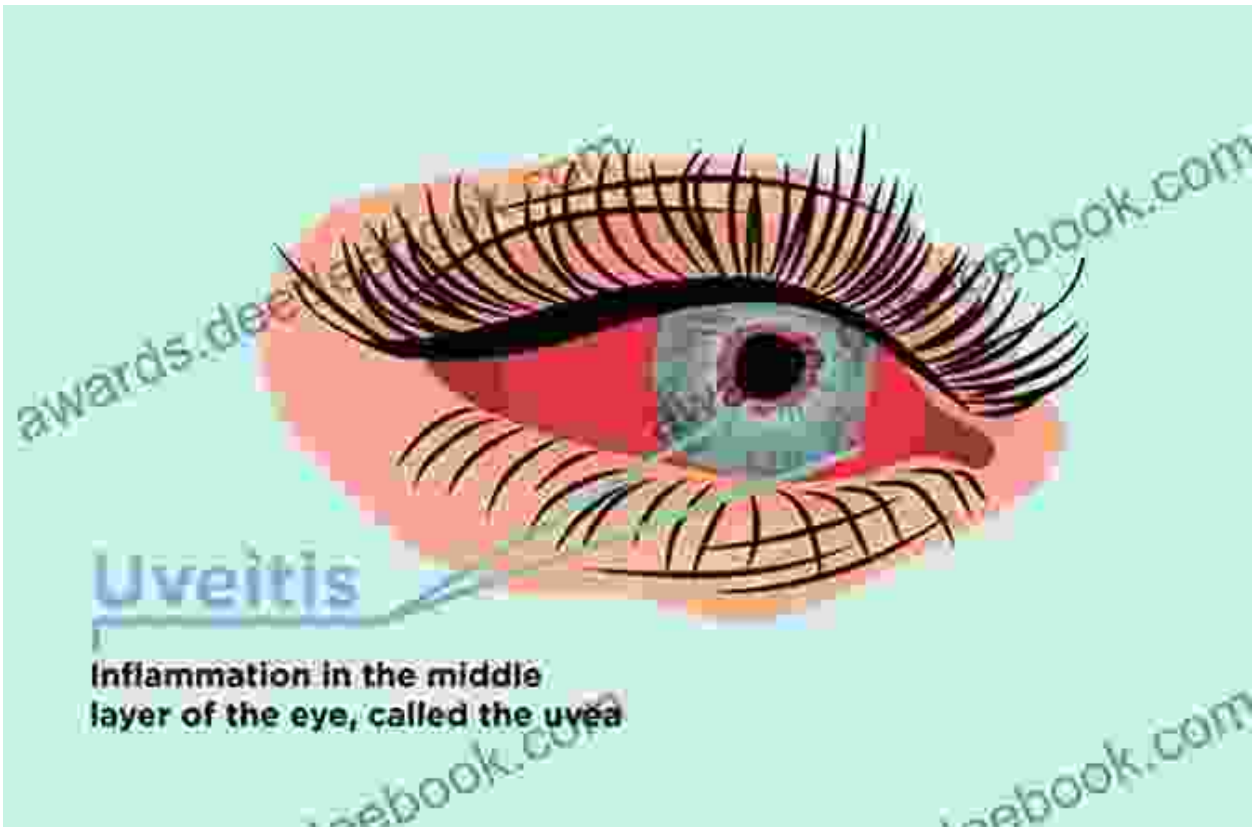
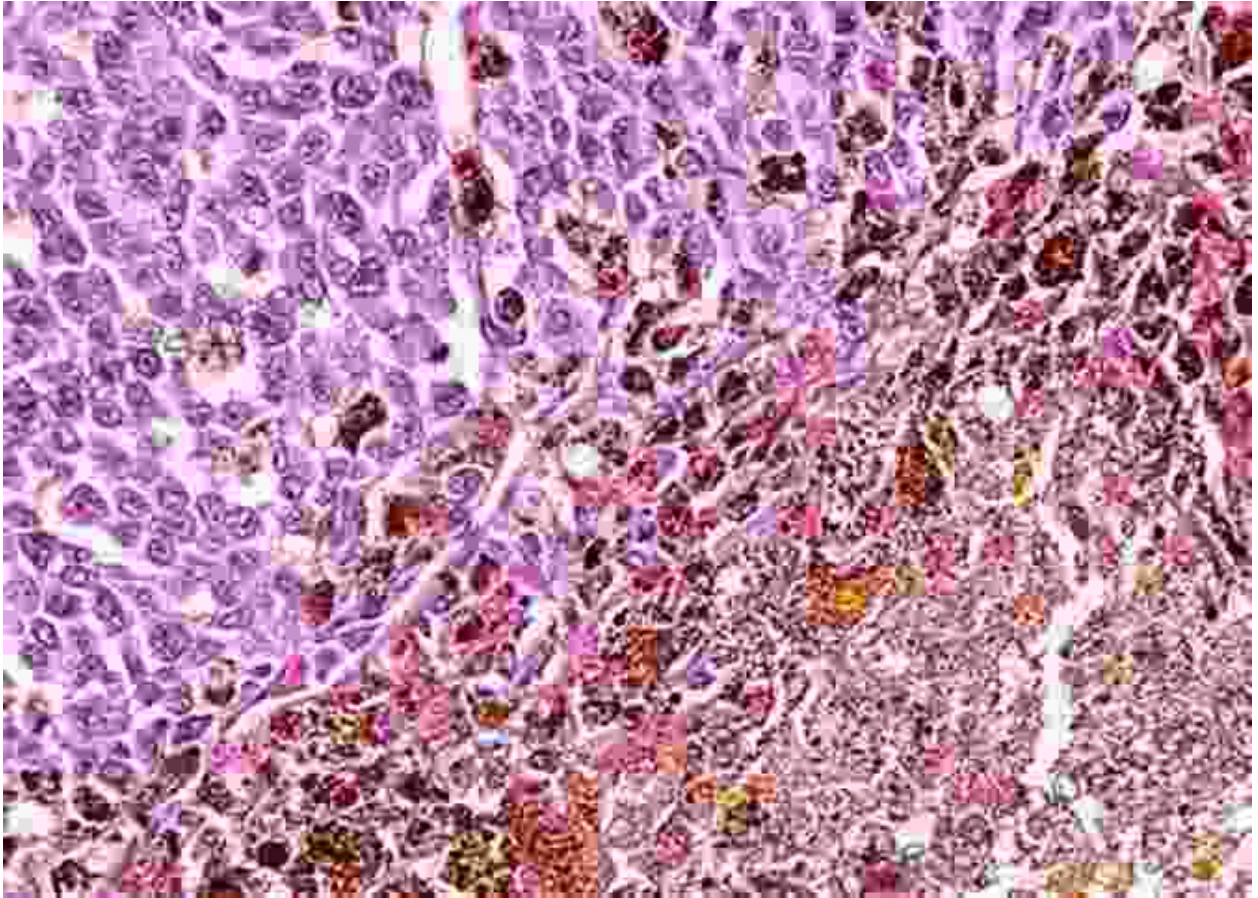
- **Differentiating between benign and malignant tumors:** Accurate diagnosis of eye tumors is crucial for determining appropriate treatment and preventing vision loss.
- **Identifying the cause of uveitis:** Uveitis is a common eye inflammation that can have various causes. Histopathological examination can help identify the underlying cause and guide targeted therapy.
- **Evaluating corneal ulcers:** Corneal ulcers can lead to vision impairment and even blindness. Histopathology can help determine the nature of the ulcer and guide antibiotic treatment.

Lee Ophthalmic Histopathology is committed to providing comprehensive and accurate diagnostic services for eye diseases. Our team of experienced pathologists, advanced techniques, and state-of-the-art equipment ensure timely and reliable diagnoses. We are dedicated to helping ophthalmologists and patients navigate the complex world of eye diseases and achieve the best possible outcomes.

For more information or to schedule a consultation, please visit our website or contact us at (123) 456-7890.

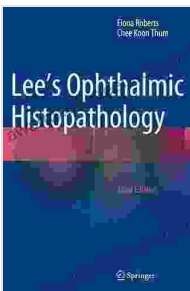
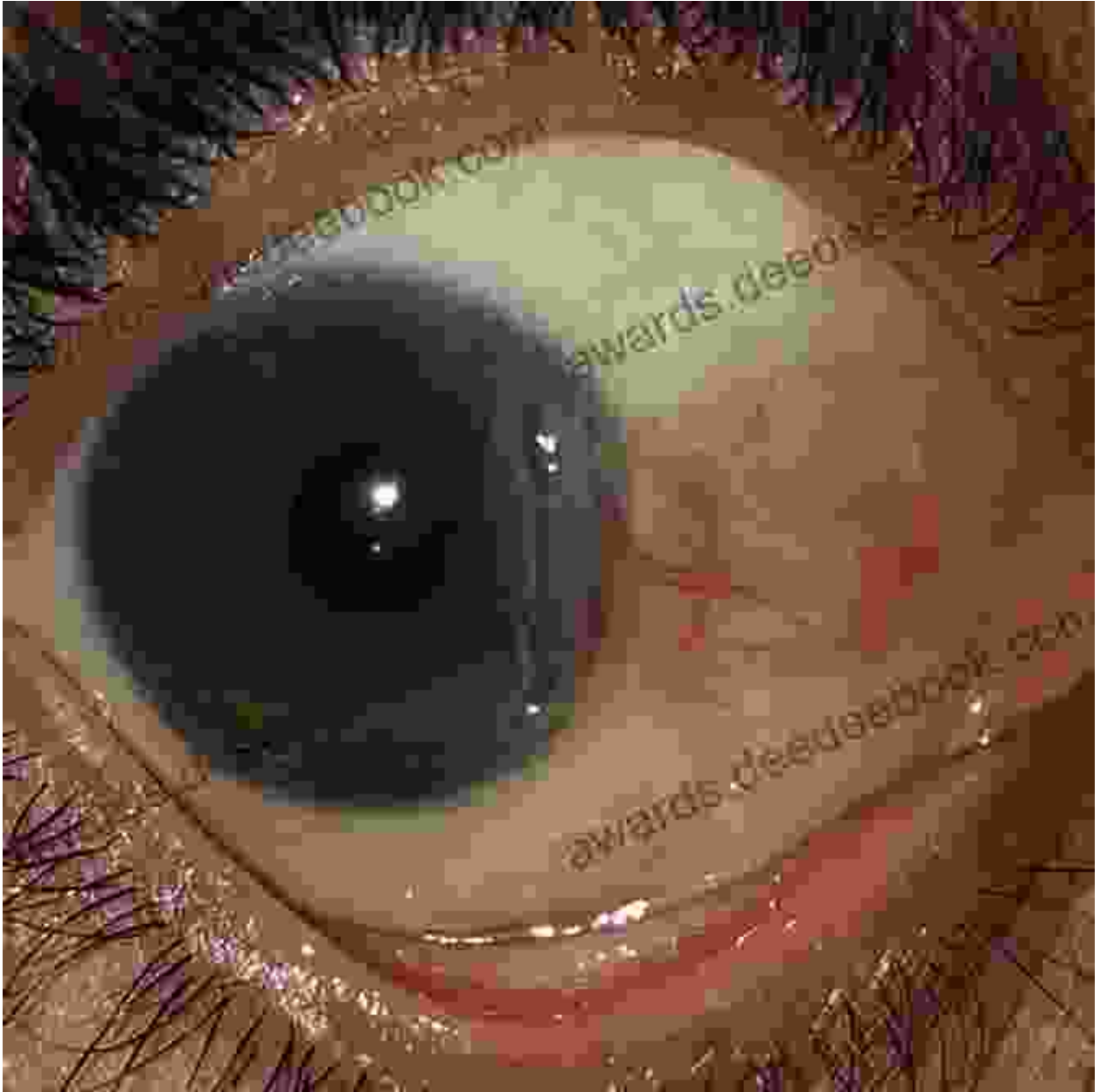
Image Alt Attributes





Uveitis

Inflammation in the middle layer of the eye, called the uvea



Lee's Ophthalmic Histopathology by Paul D. Sponseller

★★★★★ 5 out of 5

Language : English
File size : 346989 KB
Text-to-Speech : Enabled
Enhanced typesetting : Enabled
Print length : 1522 pages
Screen Reader : Supported

FREE

DOWNLOAD E-BOOK



The Waning of the Individual in the Global Era: A Comprehensive Analysis

In the rapidly globalizing world of today, the concept of the individual has undergone a profound transformation. As societies become increasingly interconnected and...



First of Verbs: An Early Language

The First of Verbs (FOV) is an early language that was spoken by humans. It is believed to have been the first language to emerge after the development of human cognition...